

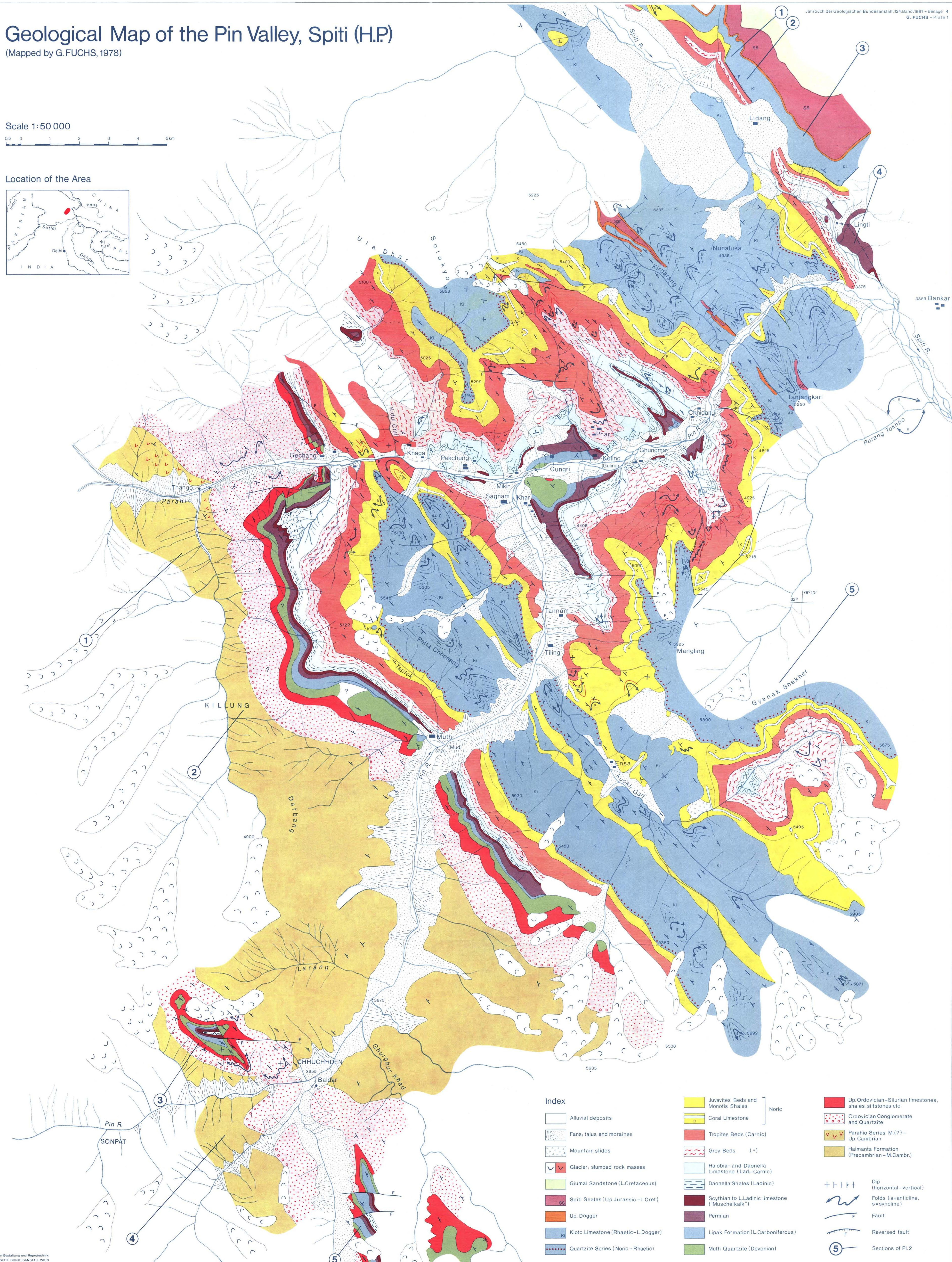
Geological Map of the Pin Valley, Spiti (H.P.)

(Mapped by G. FUCHS, 1978)

Scale 1:50 000



Location of the Area



Index

- | | | | | | | |
|--|--------------------------------------|--|---|---------|---|---|
| | Alluvial deposits | | Juvavites Beds and Monotis Shales | } Noric | | Up. Ordovician-Silurian limestones, shales, siltstones etc. |
| | Fans, talus and moraines | | Coral Limestone | | | Ordovician Conglomerate and Quartzite |
| | Mountain slides | | Tropites Beds (Carnic) | | Parahio Series M(?) - Up. Cambrian | |
| | Glacier; slumped rock masses | | Grey Beds (-) | | Haimanta Formation (Precambrian-M. Camb.) | |
| | Giumal Sandstone (L. Cretaceous) | | Halobia- and Daonella Limestone (Lad.-Carnic) | | Dip (horizontal-vertical) | |
| | Spiti Shales (Up. Jurassic-L. Cret.) | | Daonella Shales (Ladinic) | | Folds (a=anticline, s=syncline) | |
| | Up. Dogger | | Scythian to L.Ladinic limestone ("Muschelkalk") | | Fault | |
| | Kioto Limestone (Rhaetic-L. Dogger) | | Permian | | Reversed fault | |
| | Quartzite Series (Noric-Rhaetic) | | Lipak Formation (L. Carboniferous) | | Sections of Pl. 2 | |
| | | | Muth Quartzite (Devonian) | | | |